

SETTING A PROXY in commonly used WEB BROWSERS

Windows

Internet Explorer

1. Click on **“Tools”** in the menu bar.
2. Click on **“Internet Options”** in the drop-down menu.
3. Click on **“Connections”** tab inside the **“Internet Options”** window.
4. Then click on **“LAN settings”**.
5. Select **ONLY “Use automatic configuration script”** filling the textbox underneath with the following address: <http://pac.units.it/proxy.pac>
6. Click on **“OK”**.
7. Click on **“Apply”** or **“OK”**.
8. Restart Internet Explorer



Inside the **“LAN settings”** window, is mandatory to check **only one** of the options. In case, uncheck **“Automatically detect settings”** and/or **“Use a proxy server for your LAN”**.

Mozilla Firefox on Windows

1. Click on **“Tools”** in the menu bar.
2. Click on **“Options”** in the drop-down menu.
3. Click on **“Advanced”**.
4. Click on **“Settings”** in the **“Network”** tab, under the **“Connections”** area.
5. Check **“Automatic Proxy Configuration (URL)”** in the **“Connection settings”** window and fill the text-box underneath with: <http://pac.units.it/proxy.pac>
6. Click on **“Reload”**.
7. Click on **“OK”** on all previously opened windows.

Mac OS

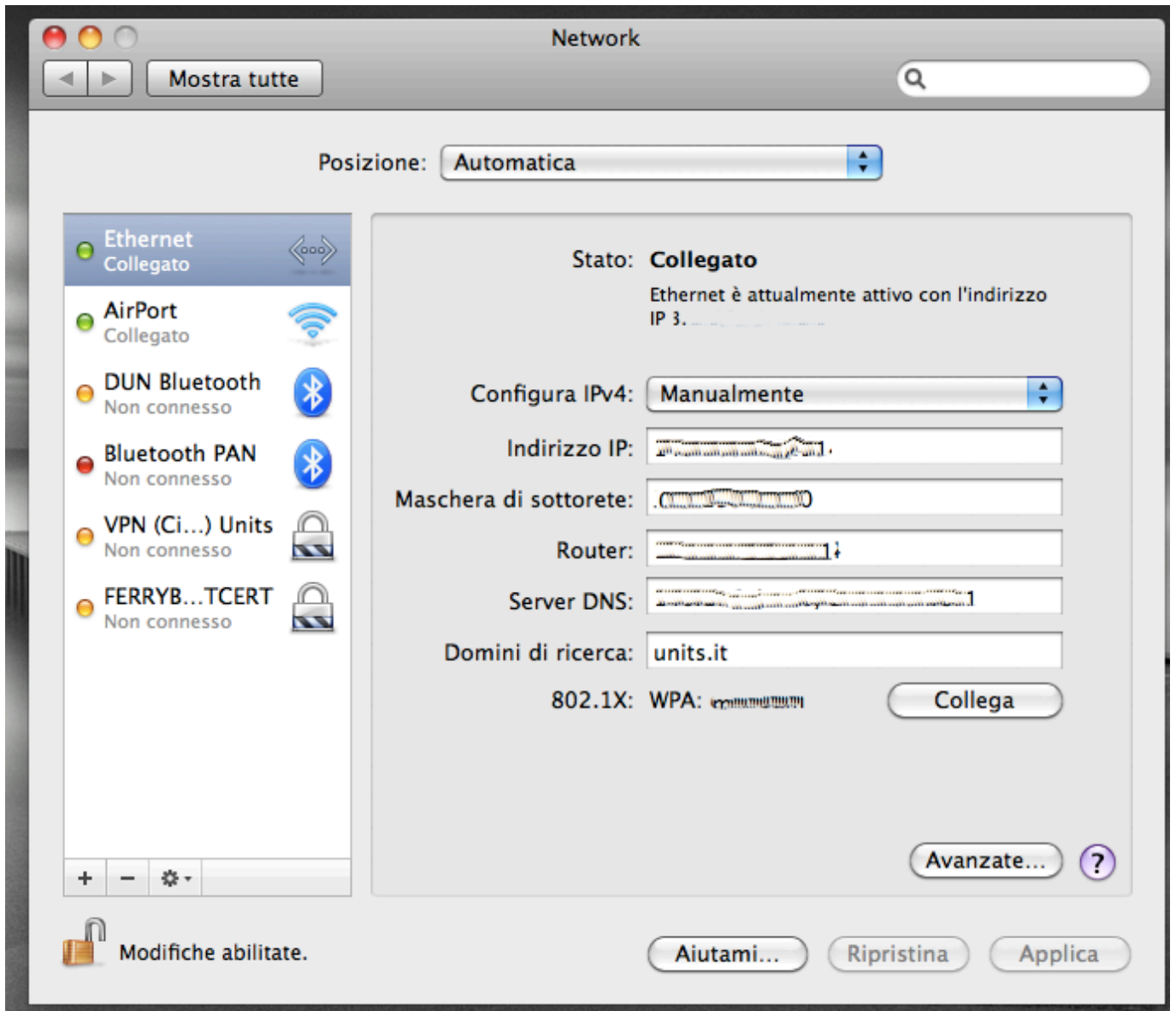
Mac OS X



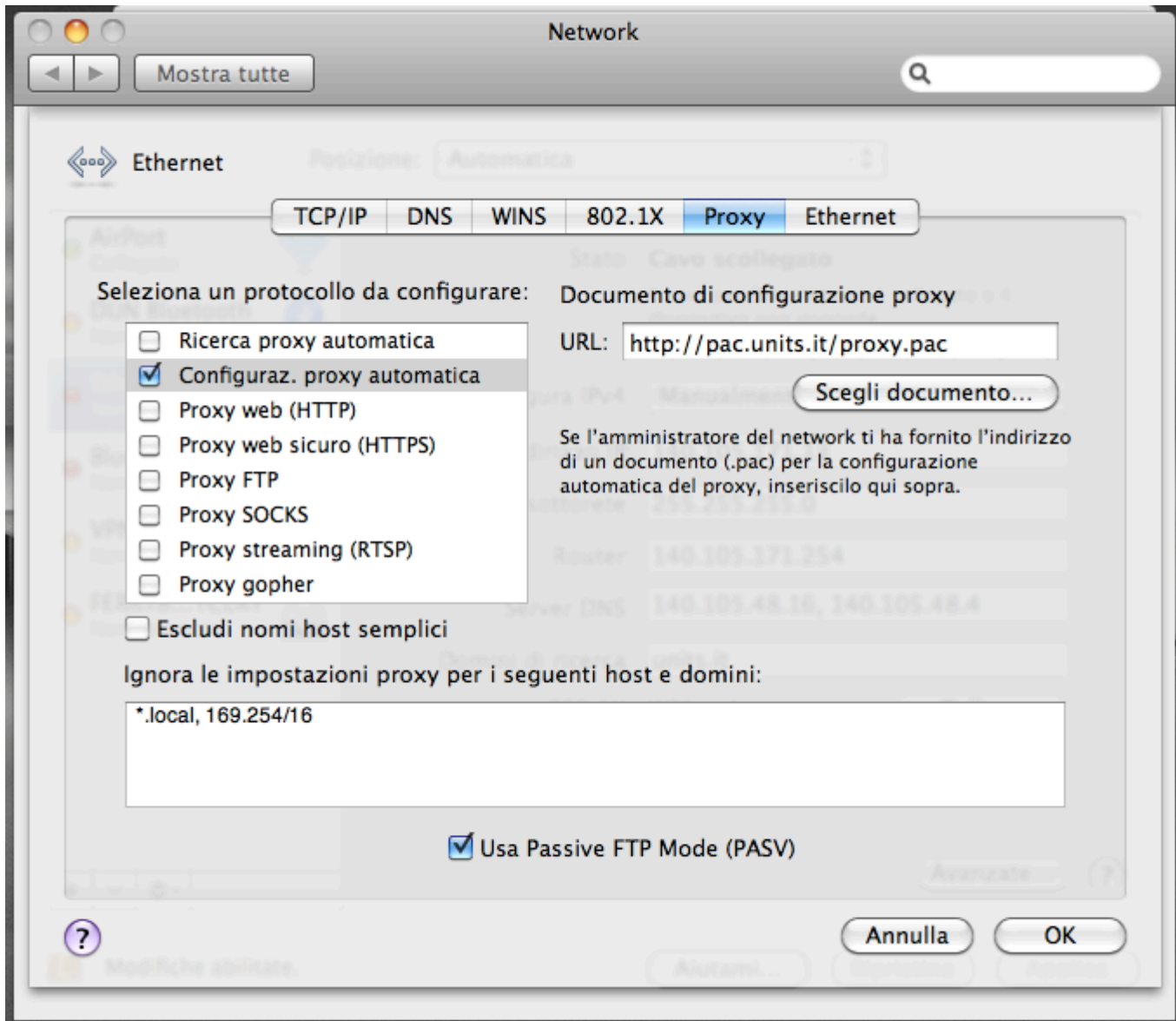
- Open “Preferenze di Sistema” (System Preferences).



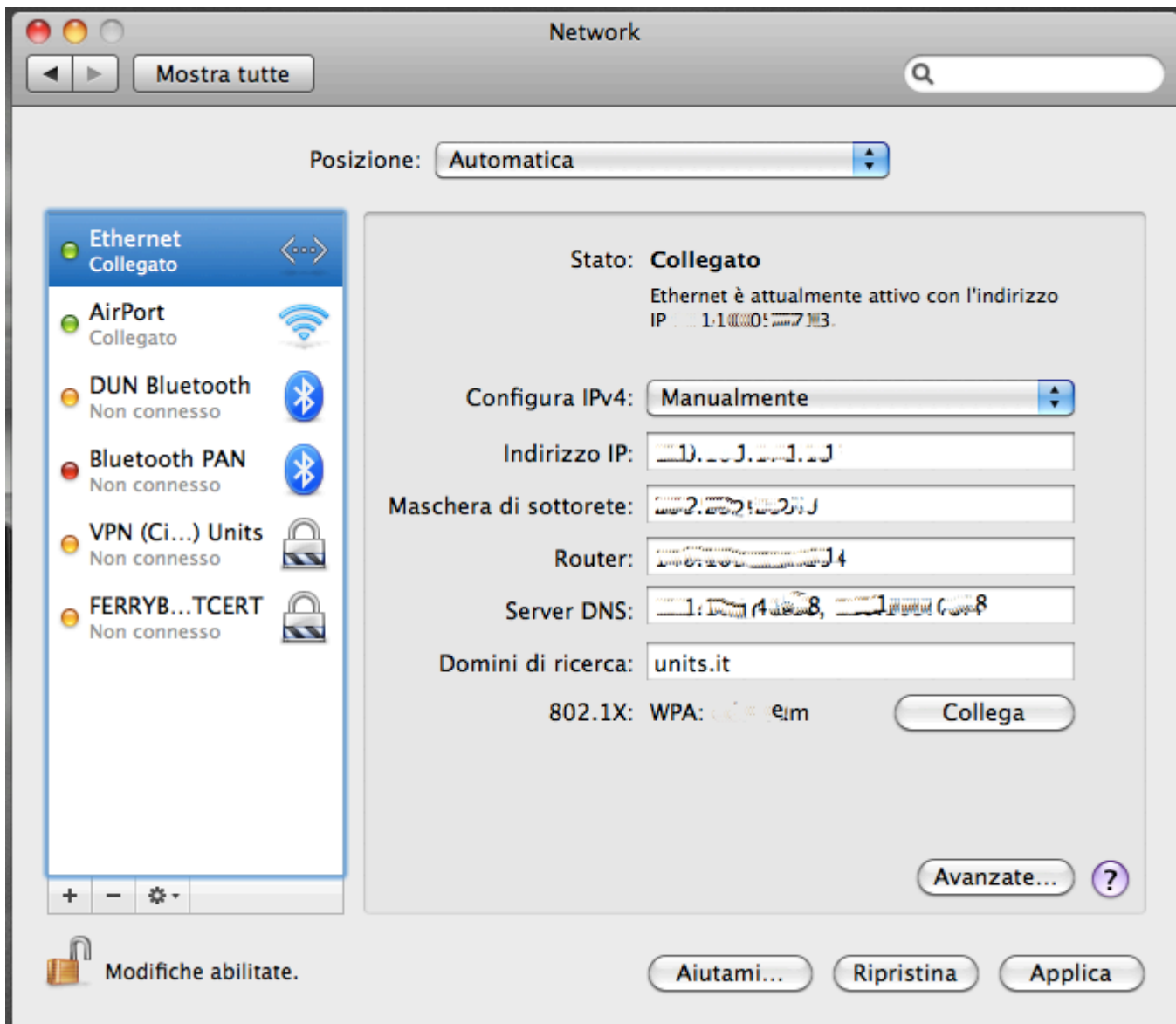
- Click on “Network”.



- Select your active connection and click on “Avanzate” (Advanced).



- Check ONLY “Automatic proxy configuration” as in the picture and fill the URL text-box with “<http://pac.units.it/proxy.pac>”.
- Click on “OK”.



- Click on “Apply”.
- Depending on which network you are using, un-plug and re-plug the network socket, disable and re-enable the current wired network connection or disable and re-enable Airport.

Linux

Mozilla Firefox on Linux

 **Fix Me!** not yet translated

1. Aperto Mozilla Firefox andare sul menù “**Modifica**” in alto a sinistra.
2. Nel menù a tendina scegliere la voce “**Preferenze**”.
3. Nella finestra “**Preferenze di Firefox**” fare clic su “**Impostazioni connessione**”.
4. Nella finestra “**Impostazioni di connessione**” selezionare “**Configurazione automatica dei proxy (URL)**”, nella casella di testo sottostante inserire il seguente indirizzo:
<http://pac.units.it/proxy.pac>
5. Fare clic su “**Ok**”

6. Fare clic su “Chiudi”

Konqueror su Linux (KDE)



not yet translated

1. Aprire il web browser Konqueror.
2. Fare clic sul menù “**Impostazioni**” e scegliere “**Configura Konqueror**”.
3. Nella finestra “**Configura Konqueror**” cercare la voce “**Proxy**” nell'elenco messo a sinistra della finestra, una volta trovata fare clic una volta sola su di essa.
4. Selezionare “**Usa la seguente URL di configurazione del proxy**”.
5. Nella casella sottostante inserire il seguente indirizzo: <http://pac.units.it/proxy.pac>

APT Linux

- Edit the *apt.conf* file and add the next line:

```
Acquire::http::Proxy "http://proxy.units.it:8080/";
```

If your distribution uses the *apt.conf.d* directory-based configuration, create a new file named something like *proxy.conf* including the above line instead of modifying the *apt.conf* file.

Other Linux applications

- Commands for the current shell

```
export http_proxy=http://proxy.units.it:8080  
export ftp_proxy=http://proxy.units.it:8080
```

In order to keep settings across reboots, insert the above lines in */etc/profile* file.

From:
<https://docu.units.it/dokuwiki/> - **Area dei Servizi ICT - Documentation**

Permanent link:
<https://docu.units.it/dokuwiki/connect:privata:web-proxy-en>

Last update: **2011/03/25 15:15 (14 anni fa)**

